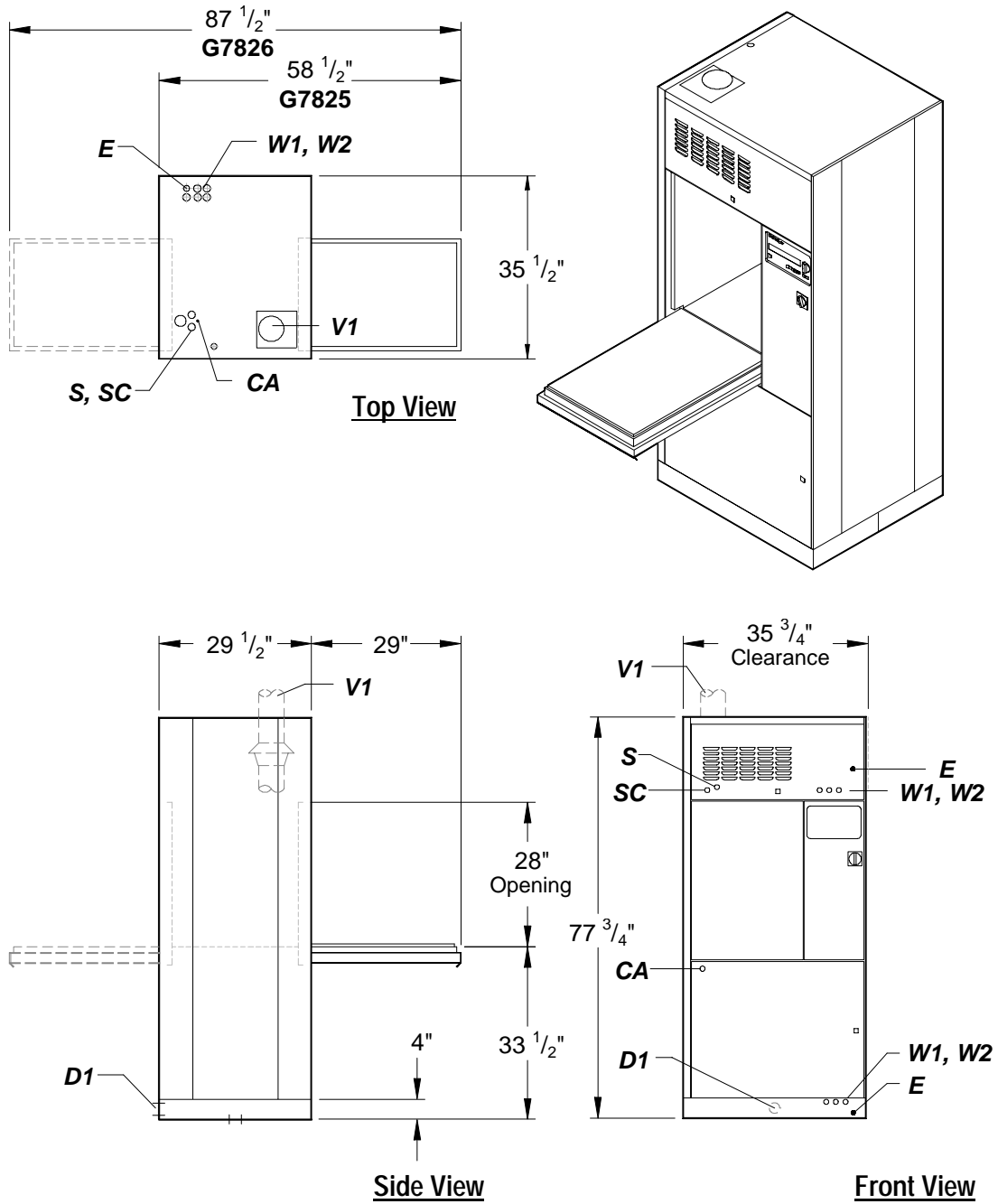




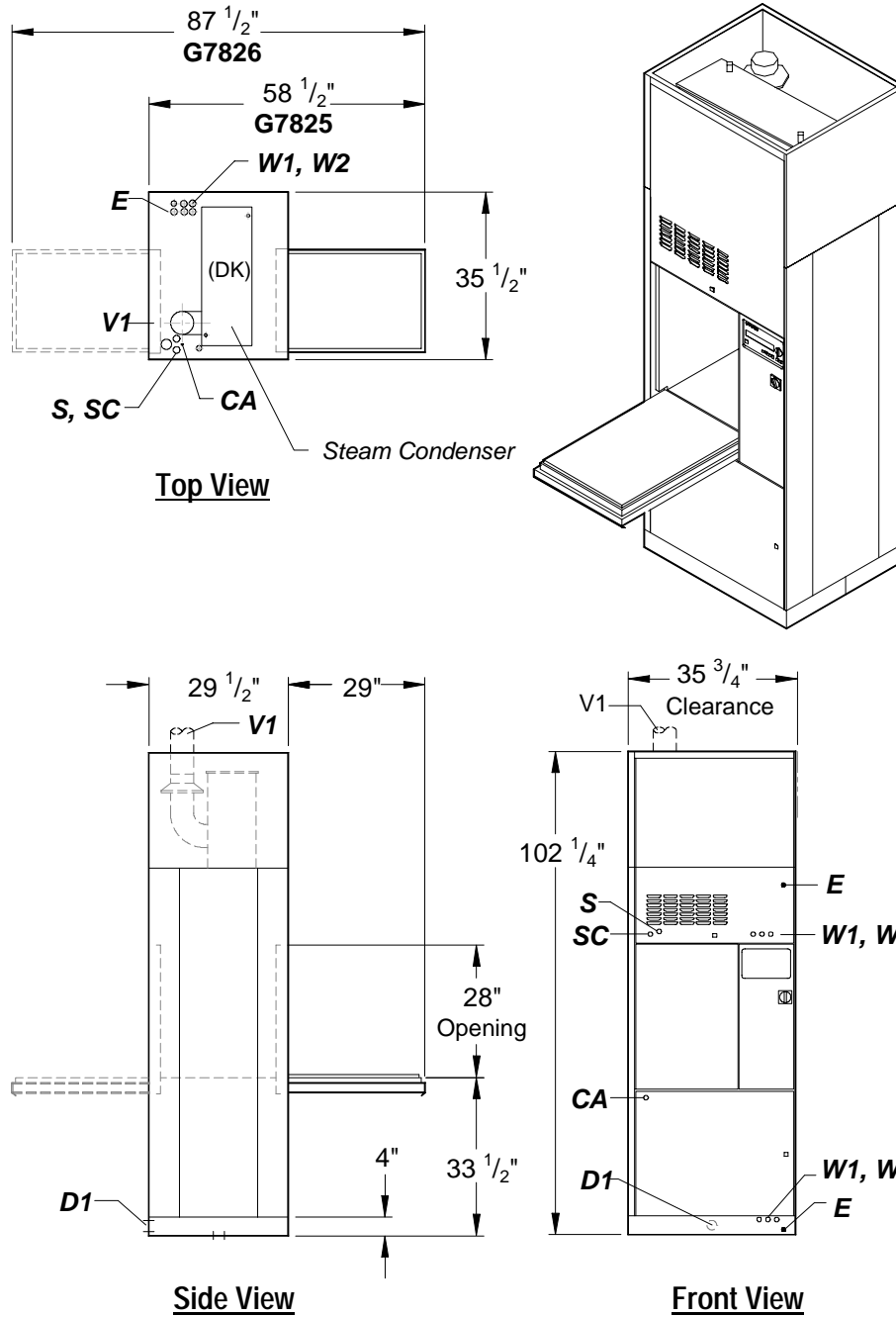
**G 7825 / G 7826**  
**Specifications and Cut-out Dimensions**



# G 7825

When installing the unit in wall, please use the following wall cutout dimensions:

$36 \frac{3}{4}"$  W x  $78 \frac{3}{4}"$  H



## G 7825 with Steam Condenser and MAV/2 Facia Kit

When installing the unit in wall, please use the following wall cutout dimensions:

36 3/4" W x 103 1/4" H

E	Electrical	Standard electrical requirements are: 208V, 3 Phase, 60 Hz, 30A. No Neutral.
S	Steam connection	Heating the machine with steam is more efficient than electrical heating and is recommended if steam is available. Steam requirements are: Pressure of 36 to 145 psi, with a return line. Two 1/2" threaded connections are provided (one for the steam connection and one for the condensate/ return).
SC	Steam Condensate connection	
CA	Compressed Air	Required only when steam is used to heat the machine. Compressed air powers the machine's steam valves. Air pressure of 85 to 175 psi is required.
W1	Hot tap water	30 to 147 psi is required 15l/min (Note1)
W1	Cold tap water	30 to 147 psi is required 15l/min (Note1)
W2	Ambient Deionized water	30 to 147 psi is required 15l/min (Note1)
<p>Note 1: Water connections are all flexible hoses; 5' long, 1/2" ID pressure hoses with 3/4" female hose thread.</p>		
D1	Drain connections	Two 1" OD flexible hoses, 5' long, from drain pumps. One 3/8" OD flexible hose, 5' long, provided from bellows pump (drip tray). If steam condenser is installed, an additional 1/2" ID drain line is provided.
<p>3" minimum floor drain or standpipe required.</p>		
V1	Ventilation	<p>Ventilation system requirements are:</p> <p>With drying unit: 206 cfm.</p> <p>Without drying unit: 60 cfm.</p> <p>Vent connection: 4 7/8" OD (125mm)</p> <p>Ideally, the washer should always be vented, even when the steam condenser option is selected. The optional steam condenser should be specified when:</p> <p>A: No ventilation system is available.</p> <p>B: The ventilation system is air-conditioned.</p> <p>C: The distance from the machine vent connection to the outside is greater than 10 feet with one 90° bend - each additional bend is the equivalent of 18" (1.5 ft).</p>

**Notes:**

- If a rolling base is used, allow a minimum of 2" additional height clearance.
- A minimum of 2' rear service clearance is required for G 7825 installations. If this is not possible, the optional rolling base with lock-down mechanism is required.